

Simonds

OWNER & SAFETY MANUAL

SR-100 SNAP RING TOOL



Made in the U.S.A.



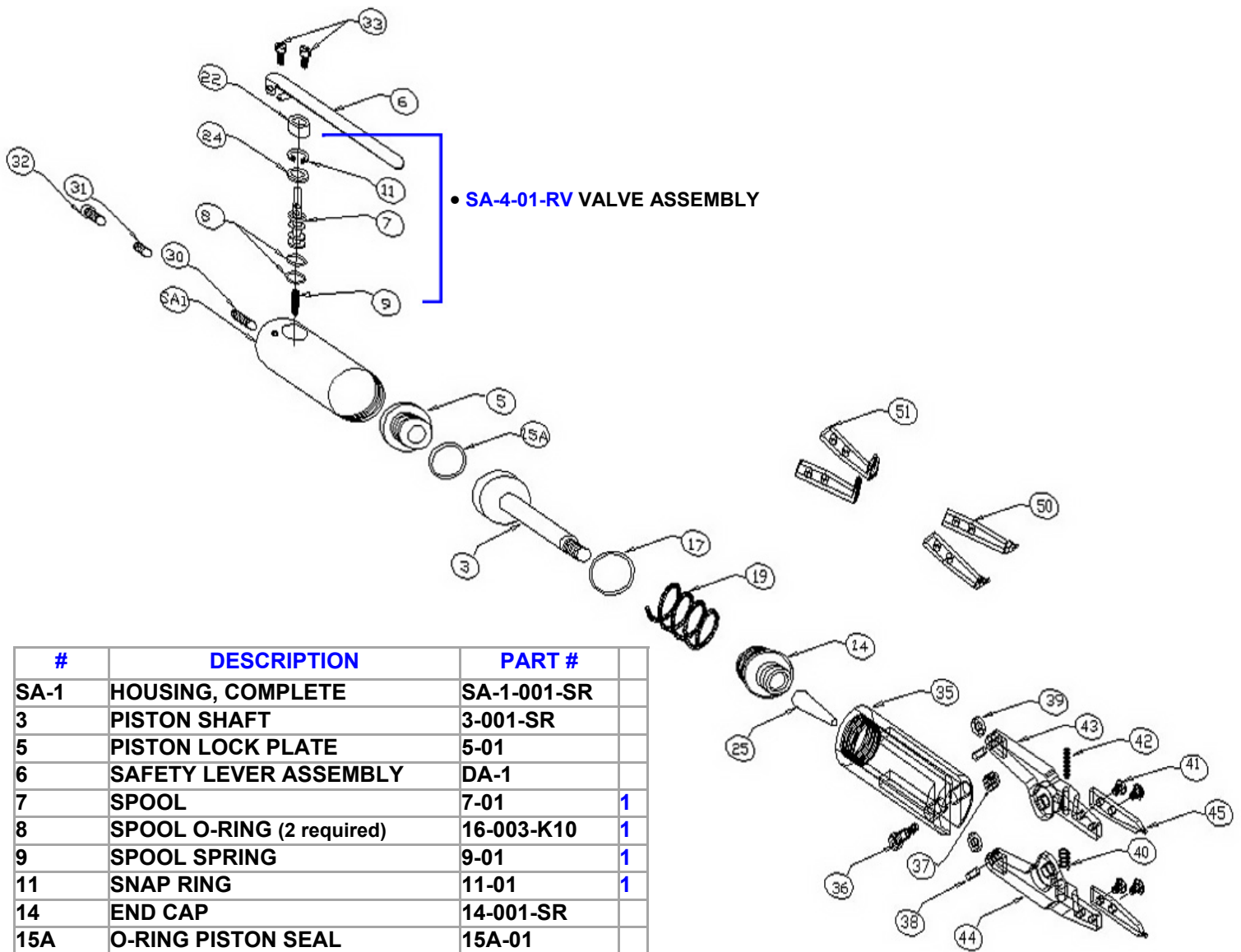
Read Carefully Before Operating



Wear Eye Protection

SIMONDS INC.
248 ELM ST. | SOUTHBRIDGE, MA 01550
508-764-3235 | sales@simonds-inc.com | www.simonds-inc.com

SR-100 PARTS BREAKDOWN



#	DESCRIPTION	PART #	
SA-1	HOUSING, COMPLETE	SA-1-001-SR	
3	PISTON SHAFT	3-001-SR	
5	PISTON LOCK PLATE	5-01	
6	SAFETY LEVER ASSEMBLY	DA-1	
7	SPOOL	7-01	1
8	SPOOL O-RING (2 required)	16-003-K10	1
9	SPOOL SPRING	9-01	1
11	SNAP RING	11-01	1
14	END CAP	14-001-SR	
15A	O-RING PISTON SEAL	15A-01	
17	O-RING	17-01-K10	
19	RETURN SPRING	19-SR	
22	VALVE SPACER	22-01	1
24	VALVE WASHER	24-01	1
25	CAM	25-C-800	
30	ADJUSTING SCREW	30-01	
31	LOCK SCREW	31-01	
32	CAP SCREW	32-01	
33	SCREW (2 Required)	28-01-k10	
35	JAW HOUSING (Includes #36,#37)	SA-2-F	
36	PIVOT SCREW	23-F	
37	INSERT NUT	33-F	
38	ROLLER PIN (2 Required)	3-20-K2	
39	JAW ROLLER (2 Required)	3-19-453-K2	
40	SPRING	40-SR	
41	MOUNTING SCREW (4 Required)	41-SR	
42	ADJUSTMENT SCREW	30-01	
43&44	JAW SET	RRSR-100	
45	STRAIGHT TIPS	SR-1	
50	45° TIPS (Optional)	SR-1-45	
51	90° TIPS (Optional)	SR-1-90	
	O-RING REPAIR KIT	01-SR-KIT	

(1) Sold as part of valve repair kit SA-04-01-RV

ASSEMBLY

- Upon receipt inspect box for all parts.
- Screw on separate head. This should go on hand tight and should line up with air lever.
- Prior to use attach air hose to air inlet of power pack using proper wrench size. Check that all threads are free of debris.
- Attach air hose to Air filter/Regulator using a quick disconnect device. Be sure that air hose is secure. There should be no air leaks. If there is, remove hose and check threads for damage. Reattach air hose, tighten.

- **ISOLATE AIR WHILE ATTACHING HOSE AND JAW HEAD!**

- Test unit to assure free movement of jaws. Be sure to follow all safety instructions when testing.
- Once unit has been tested and safety issues addressed the unit is ready for production line use.

Simonds [SR-100-SR](#) power pack is a pneumatic tool intended for use with Snap Ring jaws. Simonds power packs are designed to use specific heads (attachments) for this purpose. These heads are sold separate and rated by the work to be performed.

By pushing the safety latch forward on the hand models the operator is able to push down on the treadle lever to activate the tool. When the tool is activated a piston will push forward causing movement at the head. Without the optional attachment a piston with a cam will operate forward. An attached head will open or close when attached to the power pack.

OPERATING INSTRUCTIONS

- Maximum inlet pressure is 5.516 BAR (80 PSI). The power pack needs to have an inline locking regulator to assure that maximum inlet pressure is not exceeded. Minimum air pressure is 2.758 BAR (40 psi). O-rings may not seat properly and unit can leak air if lower than then 2.758 BAR (40 psi).
- For longer tool life it is recommend to use only enough air to complete the job, never exceeding the recommended pressure.
- Tools should have an in line air filter to remove debris, water and particulates. Inline air filter and regulator should be not more than 1.83 meters (6 feet) from the tool.
- An inline lubricator will help to extend the life of the tool. Only use pneumatic oil in the lubricator. If no lubricator is available place a few drops of pneumatic oil in to the air inlet of tool each week. Only lubricants recommended by Simonds are to be used.
- Only tools recommended and manufactured by Simonds are to be used on this power pack. Use of other tools may constitute a hazard or void warranty.
- To activate unit, slide safety lever over with thumb and squeeze lever. Be sure to release start and stop device in case of a failure of energy supply.
- Air hose must be securely fastened to the air inlet prior to using. Be sure hose is tightened using the proper tool. The air hose should have a .25 mm NPT (1/8") thread attached that will screw in to the tool end.
- Air hose should be attached to air supply (air filtration system) securely. It is recommended that a quick disconnect devise be used to attach air hose to air supply.

TIP ADJUSTMENTS

- Locate cap at rear of power pack. This consists of three parts: #32 screw cap, #31 locking screw, #30 internal adjustment screw.
- Remove the first two screws to gain access to the inner adjustment screw.
- By turning the internal adjustment screw (#30) clockwise it will restrict the tip opening.
- By turning the internal adjustment screw (#30) counter clockwise it will increase the tip opening.
- Adjust the tips. When you have achieved the opening you want replace the locking screw (#31) and screw cap (#32).

SAFETY INSTRUCTIONS

- Inspect tools and hoses each day prior to operation. Air hose that is frayed, cut or abraded should be replaced. Be sure that threads are clean and not worn.
- If the tool is not in use and not positively disconnected from the energy supply, the energy supply system must facilitate isolation and dissipation of pressure by a suitable and lockable shutoff device in order to prevent unexpected start-up.
- Beware of hair, fingers, ties, loose clothing etc. when operating the tool. Keep away from moving parts.
- Always wear eye protection when operating the tool. Beware of ejection of cuttings or chips. Turn head to avoid being exposed to this operation.
- Beware that working on brittle material may cause harmful splinters.
- Always disconnect from air supply when changing tool, during repair, adjusting and inserting tools, maintenance and cleaning operations.
- Simonds tools are not designed for use in explosive atmospheres.
- Simonds tools are not insulated for coming in to contact with electric power sources.
- Do not use tools near personnel where risk of flying debris may hit them.
- Do not point or aim tool at another person.
- Unsecured or cut air hose may cause a whipping action which may result in injury.
- Do not use any attachments not manufactured by Simonds for this tool. Injury may result.
- If the tool is used on a bench stand or a work station be sure that the tool is fastened properly.
- Dispose of tool and material as recommended by local disposal regulations.
- Simonds tools are not for use other than on production line. Tool should not be used as a hammer or pry bar. A “two hand control” may be required depending on the attached tool.
- **DO NOT EXCEED RECOMMENDED WIRE SIZE OR AIR PRESSURE.** Exceeding the recommended wire size for the jaws may cause damage to tool or injury to user.

WARRANTY

Simonds Inc. power packs and jaws are warrantied to be free from defects in materials and workmanship for a period of one year, barring alterations, abuse or misuse. All products returned for warranty repair must be sent to Simonds Inc., Southbridge, MA at end users expense. Simonds will either repair or replace the tool if it is found defective due to material defect or workmanship at Simonds discretion.

Warranty repairs accepted only through distributors with proper RMA's.

www.simonds-inc.com