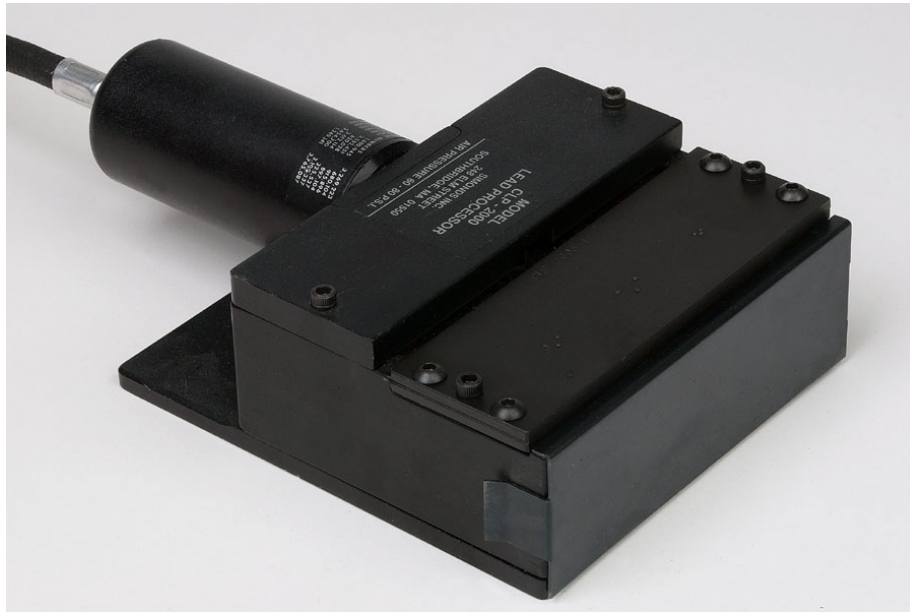


Owners & Safety Manual

CLP-2000A COMPONENT LEAD PROCESSOR

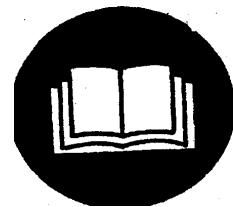


DIMENSIONS	3"H X 8"L X 5 1/4"W
WEIGHT	4.5 LBS
WORKING PRESSURES	60-80 PSI

Simonds
Manufacturer of Pneumatic and Hydraulic Tools

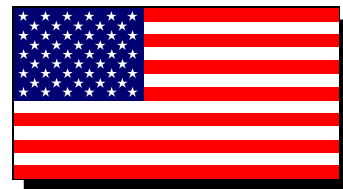


Wear Eye Protection

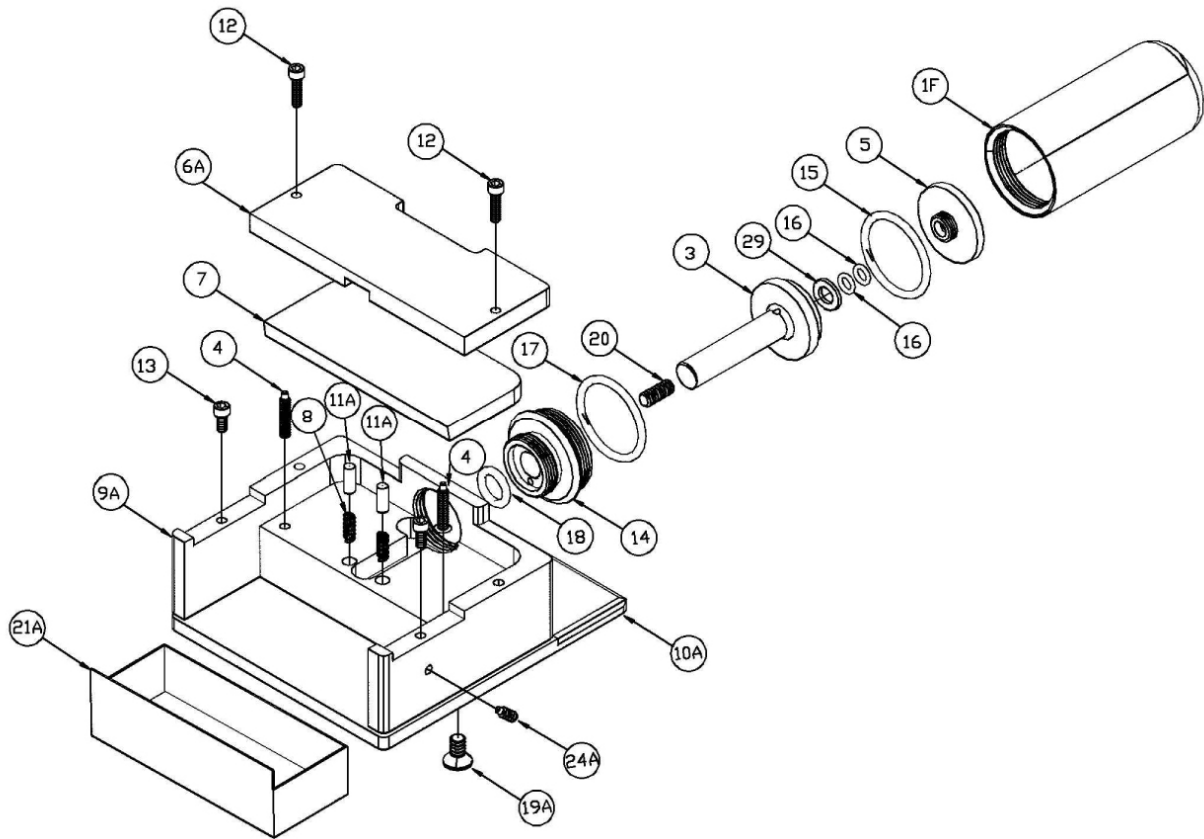


Read manual carefully.

248 ELM ST.
SOUTHBRIDGE, MASSACHUSETTS 01550
USA
PHONE: 508-764-3235
FAX: 508-765-5125
E-mail: sales@simonds-inc.com



Made in the U.S.A.



DRWG. NO.	DESCRIPTION	PART NO.
1F	PISTON HOUSING	1-F-002
3	PISTON SHAFT (INCLUDES 20-CLP-2000)	3-2000-CLP
4	SPRING PLUNGER	4-CLP-2000
5	LOCK NUT	36-CLP
6A	COVER PLATE	6A-CLP-2000
7	CUTTER BLADE	7-CLP-2000
8	TENSION SPRING	3-CLP-K10
9A	BASE	9A-CLP-2000
10A	MOUNTING PLATE	10A-CLP-2000
11A	TENSION SPRING (2 REQUIRED)	11A-CLP
12	COVER SCREWS (2 REQUIRED)	12-CLP-2000
13	DIE SCREWS	13-CLP-2000
14	END CAP	5-CLP-2000
15	PISTON SEAL	15A-02***
16	O'RING (2 REQUIRED)	16-01-K10***
17	O'RING	17-02-K10***
18	O'RING	18-01***
19A	MOUNTING BASE SCREW	19A-CLP-2000
20	PISTON SHAFT EXTENSION	20-CLP-2000
21A	TRAY	21A-CLP-2000
24A	SHORT SPRING PLUNGER	24A-CLP-2000
29	PISTON WASHER	25-01***

***PART OF REPAIR KIT—#2000-KIT

NOT SHOWN BUT SUPPLIED WITH CLP-2000A OUTFIT:

107—FOOTSWITCH
102-5 (2) - AIR HOSE

7—Cutter Blade #7-CLP-2000 may be factory re-sharpened

OPERATING INSTRUCTIONS:

- Maximum inlet pressure is 5.516 BAR (80 PSI). For longer tool and blade life it is recommended to operate the tool at the lowest pressure to do the job or as indicated on the tool.
- Tools should have an in line air filter to remove debris, water and particulates. Inline air filter and regulator should be not more than 1.829 meters (6 feet) from the tool.
- An inline lubricator will help to extend the life of the tool. Only use pneumatic oil in the lubricator. If no lubricator is available place a few drops of pneumatic oil in to the air inlet of tool each week. Only lubricants recommended by Simonds are to be used.
- Only tools recommended and manufactured by Simonds are to be used on this power pack. Use of other tools may constitute a hazard or void warranty.
- After inserting lead component in to die (purchased separate) activate the tool with foot switch.
- Air hose must be securely fastened to the air inlet prior to using. Be sure hose is tightened using the proper tool. The air hose should have a .25 mm NPT (1/8") thread attached that will screw in to the tool end.
- Air hose should be attached to air supply (air filtration system) securely. It is recommended that a quick disconnect devise be used to attach air hose to air supply.

SAFETY INSTRUCTIONS

- Inspect tools and hoses each day prior to operation. Air hose that is frayed, cut or abraded should be replaced. Be sure that threads are clean and not worn.
- If the tool is not in use and not positively disconnected from the energy supply, the energy supply system must facilitate isolation and dissipation of pressure by a suitable and lockable shutoff device in order to prevent unexpected start-up.
- Beware of hair, fingers, ties, loose clothing etc. when operating the tool. Keep away from moving parts.
- Always wear eye protection when operating the tool. Beware of ejection of cuttings or chips. Turn head to avoid being exposed to this operation.
- Beware that working on brittle material may cause harmful splinters.
- Always disconnect from air supply when changing tool, during repair, adjusting and inserting tools, maintenance and cleaning operations.
- Simonds tools are not designed for use in explosive atmospheres.
- Simonds tools are not insulated for coming in to contact with electric power sources.
- Do not use tools near personnel where risk of flying debris may hit them.
- Do not point or aim tool at another person.
- Unsecured or cut air hose may cause a whipping action which may result in injury.
- Do not use any attachments not manufactured by Simonds for this tool. Injury may result.
- If the tool is used on a bench stand or a work station be sure that the tool is fastened properly.
- Dispose of tool and material as recommended by local disposal regulations.
- Simonds tools are not for use other than on production line. Tool should not be used as a hammer or pry bar. A "two hand control" may be required depending on the attached tool.
- **DO NOT EXCEED RECOMMENDED WIRE SIZE OR AIR PRESSURE.** Exceeding the recommended wire size for the jaws may cause damage to tool or injury to user.

ASSEMBLY

- Upon receipt inspect box for all parts.
- Screw on optional die.
- Prior to use attach air hose to air inlet of foot switch using proper wrench size. Attach two hoses from foot switch to back of power pack. Check that all threads are free of debris.
- Attach air hose to Air filter/Regulator using a quick disconnect device. Be sure that air hose is secure. There should be no air leaks. If there is, remove hose and check threads for damage. Reattach air hose, tighten.

- **ISOLATE AIR WHILE ATTACHING DIE OR WORKING ON UNIT!**

- Test unit to assure free movement of jaws. Be sure to follow all safety instructions when testing.
- Once unit has been tested and safety issues addressed the unit is ready for production line use.

TO REMOVE CUTTING BLADE 7A-CLP-2000

- Disconnect air supply
- Unscrew part 1F (piston) from part 9A (base).
- Remove part 6 (cover plate).
- Hold the seal end of the piston shaft part 3 in a vise and with a thin open end wrench remove the cutter blade from the shaft.

ASSEMBLY IN REVERSE ORDER

Simonds **CLP-2000A** is a pneumatic tool intended to cut or crimp wires. Any use other than intended by Simonds Inc. may void all warranties.



WARRANTY

Simonds Inc. power packs are warranted to be free from defects in materials and workmanship for a period of one year, barring alterations, abuse or misuse. All products returned for warranty repair must be sent to Simonds Inc., Southbridge, MA at end users expense. Simonds will either repair or replace the tool if it is found defective due to material defect or workmanship at Simonds discretion.

Warranty repairs accepted only through distributors with proper RMA's.