

Simonds

OWNER & SAFETY MANUAL CLP-2000A COMPONENT LEAD PROCESSOR



DIMENSIONS	3"H X 8"L X 5 1/4"W
WEIGHT	4.5 LBS
WORKING PRESSURES	60-80 PSI



Made in the U.S.A.



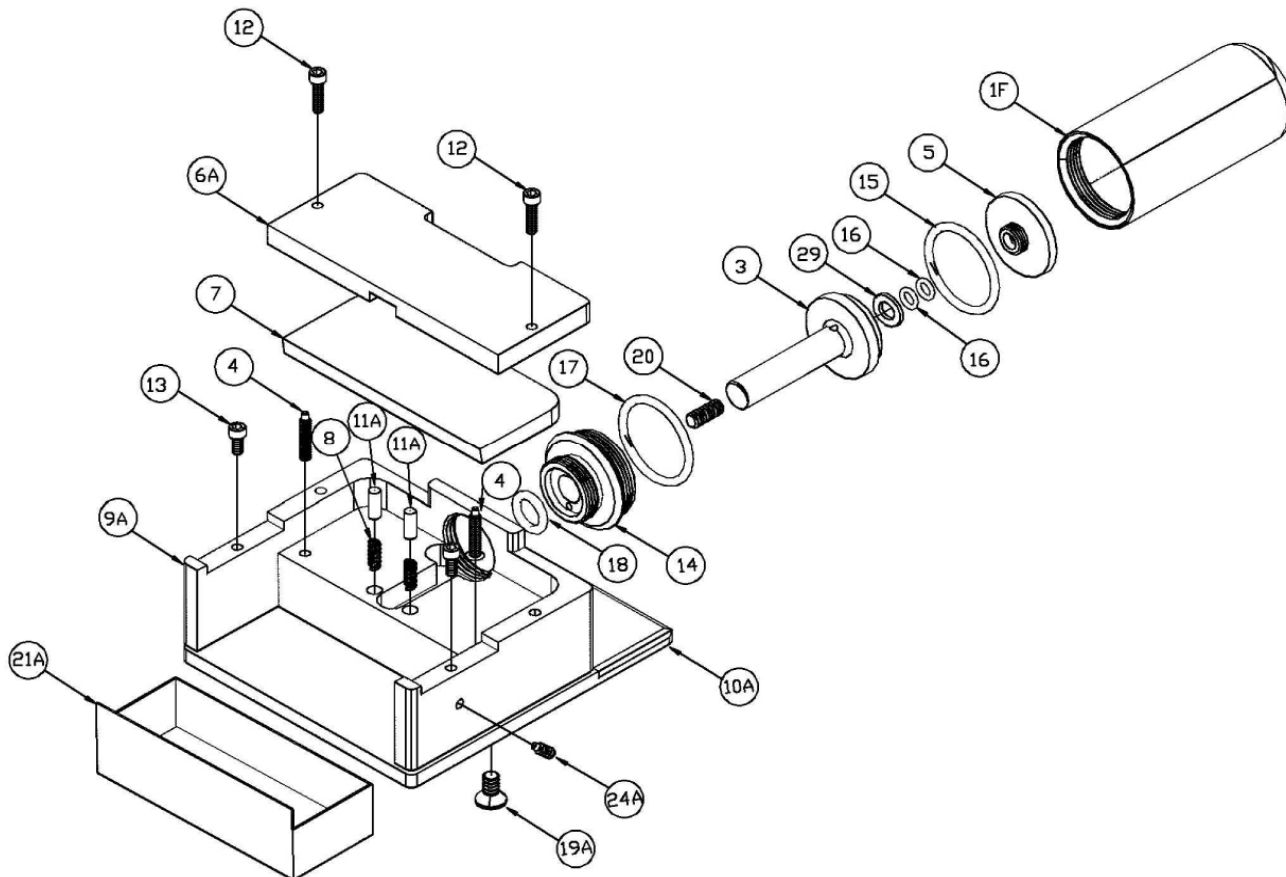
Read Carefully Before Operating



Wear Eye Protection

SIMONDS INC.
248 ELM ST. | SOUTHBRIDGE, MA 01550
508-764-3235 | sales@simonds-inc.com | www.simonds-inc.com

CLP-2000A



#	DESCRIPTION	PART #	
1F	PISTON HOUSING	1-F-002	
3	PISTON SHAFT (includes 20-CLP-2000)	3-2000-CLP	
4	SPRING PLUNGER	4-CLP-2000	
5	LOCK NUT	36-CLP	
6A	COVER PLATE	6A-CLP-2000	
7	CUTTER BLADE	7-CLP-2000	
8	TENSION SPRING	3-CLP-K10	
9A	BASE	9A-CLP-2000	
10A	MOUNTING PLATE	10A-CLP-2000	
11A	TENSION SPRING (2 required)	11A-CLP	
12	COVER SCREWS (2 required)	12-CLP-2000	
13	DIE SCREWS	13-CLP-2000	
14	END CAP	5-CLP-2000	
15	PISTON SEAL	15A-02***	1
16	O-RING (required)	16-01-K10***	1
17	O-RING	17-02-K10***	1
18	O-RING	18-01***	1
19A	MOUNTING BASE SCREW	19A-CLP-2000	
20	PISTON SHAFT EXTENSION	20-CLP-2000	
21A	TRAY	21A-CLP-2000	
24A	SHORT SPRING PLUNGER	24A-CLP-2000	
29	PISTON WASHER	25-01***	1
	POWER PACK REPAIR KIT	2000-KIT	
Not Shown	FOOT SWITCH (included)	107	
Not Shown	AIR HOSE (2 included)	102-5	

(1) Part of Power Pack Repair KIT

7: Cutter Blade 7-CLP-2000 may be factory re-sharpened

ASSEMBLY

- Upon receipt inspect box for all parts.
- Screw on optional die.
- Prior to use attach air hose to air inlet of foot switch using proper wrench size. Attach two hoses from foot switch to back of power pack. Check that all threads are free of debris.
- Attach air hose to Air filter/Regulator using a quick disconnect device. Be sure that air hose is secure. There should be no air leaks. If there is, remove hose and check threads for damage. Reattach air hose, tighten.

ISOLATE AIR WHILE ATTACHING DIE OR WORKING ON UNIT!

- Test unit to assure free movement of jaws. Be sure to follow all safety instructions when testing.
- Once unit has been tested and safety issues addressed the unit is ready for production line use.

TO REMOVE CUTTING BLADE 7A-CLP-2000

- Disconnect air supply
- Unscrew part 1F (piston) from part 9A (base).
- Remove part 6 (cover plate).
- Hold the seal end of the piston shaft part 3 in a vise and with a thin open end wrench remove the cutter blade from the shaft.

ASSEMBLY IN REVERSE ORDER

OPERATING INSTRUCTIONS:

- Maximum inlet pressure is **80 PSI** (5.516 BAR). The power pack needs to have an inline locking regulator so that maximum inlet pressure is not exceeded. Minimum air pressure is 40 PSI (2.758BAR).
For longer tool life it is recommend to use only enough air to complete the job, never exceeding the recommended pressure.
- Tools should have an in line air filter to remove debris, water and particulates. Inline air filter and regulator should be not more than 6 feet (1.83 m) from the tool.
- An inline lubricator will help to extend the life of the tool. Only use pneumatic oil recommended by Simonds in the lubricator. If no lubricator is available place a few drops of pneumatic oil in to the air inlet of tool each week.
- To activate unit, slide safety latch over with thumb and squeeze lever. Be sure to release start and stop device in case of a failure of energy supply.
- Air hose must be securely fastened to the air inlet prior to using. Be sure hose is tightened using the proper tool. The air hose needs a 1/8" (.25 mm NPT) thread attached that will screw in to the tool end.
- Air hose should be attached to air supply (air filtration system) securely. It is recommended that a quick disconnect device be used to attach air hose to air supply.

SAFETY INSTRUCTIONS

- Inspect tools and hoses each day prior to operation. Air hose that is frayed, cut or abraded should be replaced. Be sure that threads are clean and not worn.
- If the tool is not in use and not positively disconnected from the energy supply, the energy supply system must facilitate isolation and dissipation of pressure by a suitable and lockable shutoff device in order to prevent unexpected start-up.
- Beware of hair, fingers, ties, loose clothing etc. when operating the tool. Keep away from moving parts.
- Always wear eye protection when operating the tool. Beware of ejection of cuttings or chips. Turn head to avoid being exposed to this operation.
- Beware that working on brittle material may cause harmful splinters.
- Always disconnect from air supply when changing tool, during repair, adjusting and inserting tools, maintenance and cleaning operations.
- Simonds tools are not designed for use in explosive atmospheres.
- Simonds tools are not insulated for coming in to contact with electric power sources.
- Do not use tools near personnel where risk of flying debris may hit them.
- Do not point or aim tool at another person.
- Unsecured or cut air hose may cause a whipping action which may result in injury.
- Do not use any attachments not manufactured by Simonds for this tool. Injury may result.
- If the tool is used on a bench stand or a work station be sure that the tool is fastened properly.
- Dispose of tool and material as recommended by local disposal regulations.
- Simonds tools are not for use other than on production line. Tool should not be used as a hammer or pry bar. A “two hand control” may be required depending on the attached tool.
- **DO NOT EXCEED RECOMMENDED WIRE SIZE OR AIR PRESSURE.** Exceeding the recommended wire size for the jaws may cause damage to tool or injury to user.

WARRANTY

Simonds Inc. power packs and jaws are warrantied to be free from defects in materials and workmanship for a period of one year, barring alterations, abuse or misuse. All products returned for warranty repair must be sent to Simonds Inc., Southbridge, MA at end users expense. Simonds will either repair or replace the tool if it is found defective due to material defect or workmanship at Simonds discretion.

Warranty repairs accepted only through distributors with proper RMA's.